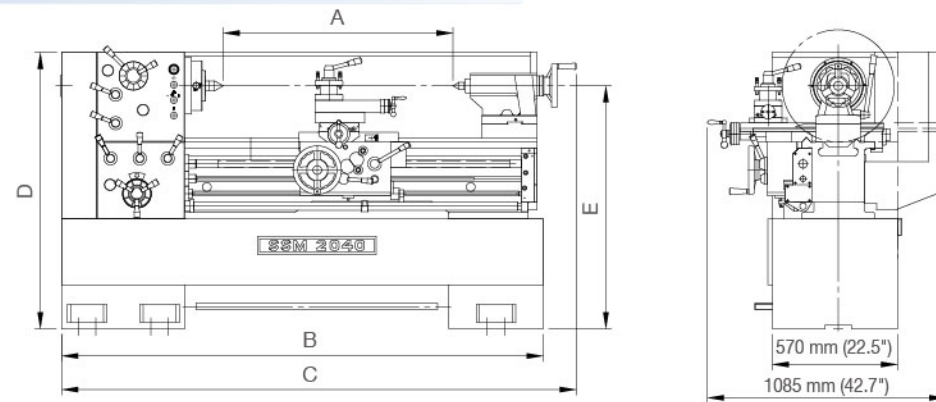


MEASUREMENT



MODEL	A	B	C	D	E
1740	1000 mm (40")	2190 mm (86")	2340 mm (92")	1220 mm (48")	1070 mm (42")
1760	1500 mm (60")	2700 mm (106")	2850 mm (112")	1220 mm (48")	1070 mm (42")
1780	2000 mm (80")	3210 mm (126")	3360 mm (132")	1220 mm (48")	1070 mm (48")
2040	1000 mm (40")	2190 mm (86")	2340 mm (92")	1257 mm (50")	1105 mm (44")
2060	1500 mm (60")	2700 mm (106")	2850 mm (112")	1257 mm (50")	1105 mm (44")
2080	2000 mm (80")	3210 mm (126")	3360 mm (132")	1257 mm (50")	1105 mm (44")

BRIEF SPECIFICATION

MODEL	1740 1740V	1760 1760V	1780 1780V	2040 2040V	2060 2060V	2080 2080V
NOMINAL SIZE	Swing over bed		440 mm (17-5/16")		510 mm (20")	
	Swing over cross slide		272 mm (10-3/4")		342 mm (13-1/2")	
	Height of center		220 mm (8-5/8")		255 mm (10")	
	Distance between centers		1000 mm (40")	1500 mm (60")	2000 mm (80")	1000 mm (40")
BED	Width of bedways		330 mm (13")			
	Total length of bed		2000 mm (78")	2510 mm (98")	3020 mm (118")	2000 mm (80")
	Swing over gap		660 mm (26")		730 mm (28-3/4")	
	Length of gap		300 mm (11-3/4")			
SPINDEL	Width in front of face plate		190 mm (7-1/2")		175 mm (6-3/4")	
	Spindle nose mounting		D1-8 CAMLOCK			
	Spindle bore		86mm (3-3/8")			
	Taper of spindle bore		M.T.#5			
TOOL SLIDE	Number of spindle speeds		12 steps (Variable speed change 3 steps)			
	Range of spindle speeds		20-1800 R.P.M. (Variable speed change 10-2000 R.P.M.)			
	Total travel of cross slide		260 mm (10-1/4")			
	Total travel of top slide		130 mm (5-1/8")			
TAIL STOCK	Max. size cutting tool		25 mm (1")			
	Total travel of tailstock barrel		150 mm (6")			
	Taper in tailstock barrel		M.T.#5			
	Diameter of barrel		65 mm (2-9/16")			
THREADS	Lead screw diameter & pitch		Dia. 35 mm (1-3/8") Pitch 6 mm		4 T.P.I.	
	Inch threads		2-72 T.P.I. (48)			
	Metric pitches		0.2-14 mm (48)			
	Diametral pitches		8-60 D.P. (24)			
FEEDS	Module pitches		0.2-3.5 M.P. (24)			
	Feed rod diameter		25 mm (1")			
	Number of feed change		36			
	Range of longitudinal feeds		0.06-2.00 mm/rev. / 0.0025-0.07 in/rev. (36)			
MOTOR	Range of cross feeds		0.03-0.80 mm/rev. / 0.0010-0.03 in/rev. (36)			
	Main spindle motor		10 HP 7.5 kw			
	Coolant pump motor		1/8 HP 0.1 kw			
	WEIGHT Machine net weight		1900 kgs	2000 kgs	2200 kgs	2000 kgs
				2100 kgs	2300 kgs	

We reserve the right to modify and improve our products.

GOSAN MACHINERY CO., LTD.

NO.131 RUEIHE ST. DALI DISTRICT, TAICHUNG CITY 412,
TAIWAN, R.O.C.

TEL: 886-4-24950259

E-mail: shyeshen@ms27.hinet.net

FAX: 886-4-24934507

http://www.shyesheng.com

GOSAN

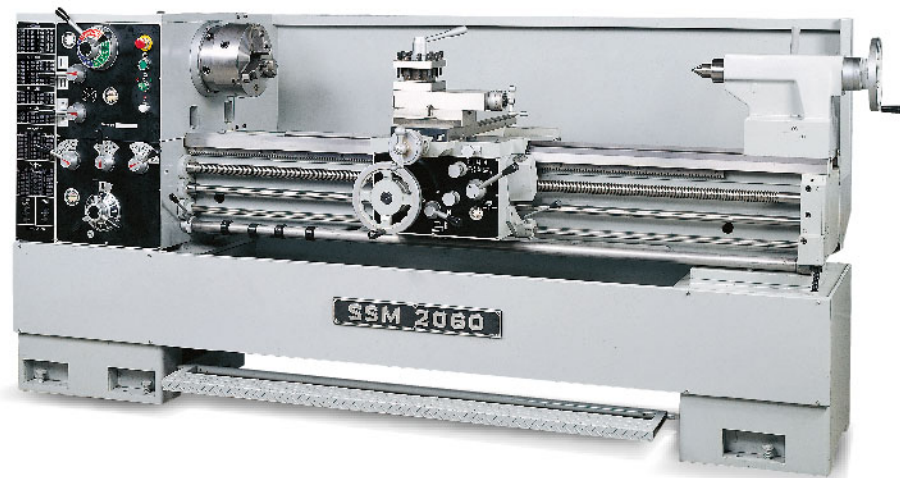
PRECISION ENGINE LATHE VARIABLE SPEED LATHE



PRECISION ENGINE LATHE VARIABLE SPEED LATHE

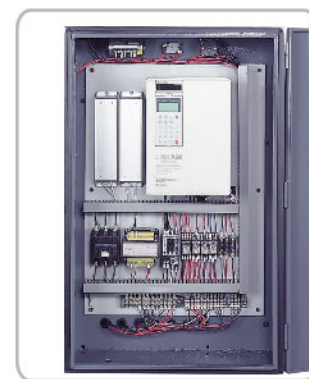


▲ VARIABLE SPEED headstock



FEATURES

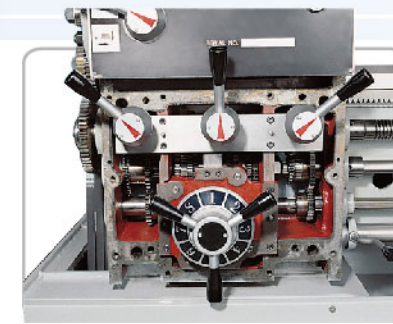
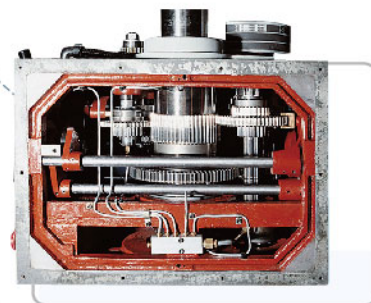
- Heavy duty geared head; hardened and ground gears.
- 86mm. 3-3/8inch hole through spindles.
- 3-point supported spindle using 2 precision taper roller bearings and 1 ball bearing.
- 12 (3) steps spindle speeds 20 – 1800 (10-2000) rpm.shift in geometric progression.
- Quick-change universal gearbox for inch, metric, DP, MP, threading.
- Forced spray lubrication system used for headstock.
- One shot lubrication pump supply oil to cross slide and bed-ways.
- Adjustable overload clutch in apron to ensure proper cutting load.
- Cross slide screw permanently immersed in oil and supported by thrust bearing.
- Induction hardened and precision ground bed-way.
- One piece base for maximum rigidity.



▲ VARIABLE SPEED Electrical box

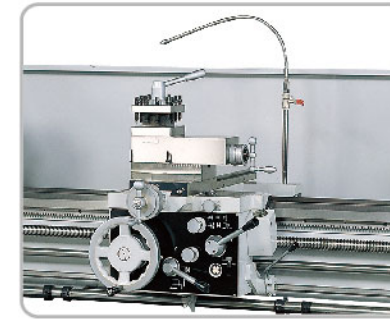
HEADSTOCK

The D1-8 CAMLOCK spindle nose has a large hole through the spindle of 3-3/8inch (86 mm). Headstock is made of rigid, high grade cast iron. All geared, Main gears are made from Chromium, Nickel, Molybdenum alloy steel and are case hardened and "REISHAUER" ground. The headstock provides 12 spindle speeds 20-1800 rpm(Variable speed 3 steps 10-2000 rpm) which are in geometric progression and are easily selected. Hardened and ground main spindle is supported by three bearings in three places (the front and middle are precision taper roller bearing, the rear is roller bearing). The automatic lubrication to all running parts inside headstock is forced by a geared lubrication gear pump.



GEARBOX

The totally enclosed gearbox provides the most comprehensive range of inch and metric feeds and threads without change end gear. Fully range of thread pitches, metric, inch, Module & Diametral. Gearing is easily and quickly changed by levers conveniently mounted in the front of the control panel. All gears are case hardened and are made of special alloy steel. Feed shaft and lead screw equipped with overload protection. Lubricated by oil bath.



SADDLE AND COMPOUND REST

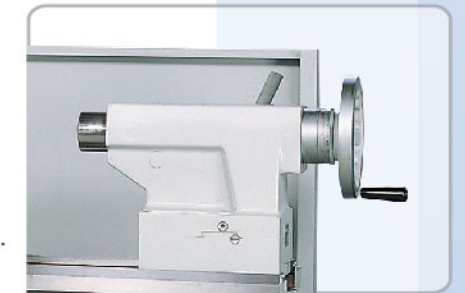
Saddle, cross-slide and top slide fitted with adjustable taper gib strips for wear compensation. Cross-slide screw incorporates backlash eliminator. Centrally lubricated slide use one shot system. Compound rest is with a four-way toolpost.

APRON

Automatic feeding and threading are fully interlock to prevent simultaneous engagement of feeds and threads. Oil bath lubrication of apron. Pull and push a knob in the front of apron, which can change the feed cutting direction from the apron, without stopping the lathe. There are one safety device, when overload cutting, the slipping clutch system will automatically shut down the feed cutting.

TAILSTOCK

Quick-acting clamps are for locking tailstock on the bed and for locking quill. The hardened and ground quill is graduated in inches and millimeters.



BEDWAY

The bedways are induction hardened and then precision ground.



STANDARD ACCESSORIES

- Back plate for chuck
- Steady rest
- Coolant system
- 4-way toolpost
- Threading dial indicator
- 4-position auto carriage feed stop
- Main motor 10HP 7.5KW
- Tool box with tool kit
- Center sleeve
- Two dead centers
- Camlock spindle wrench
- Optional manual

OPTIONAL ACCESSORIES

- 3-jaw scroll chuck 10" , 12"
- 4-jaw independent chuck 12", 16"
- Face plate
- Follow rest
- Telescopic taper attachment
- 5C lever type collet attachment
- Quick change toolpost
- Chuck guard
- Tool post guard
- Live center
- Drill chuck W/arbor
- Work lamp (quartz halogen lamp)
- CE standard equipment
- Digital readout